

Models-411, 412, 413, 414. Mild Steel or Aluminium Case & Brass Internals

Case

- (a) Mild Steel. Stove enamelled finish.
- (b) Aluminium. Stove enamelled finish.

Bezel

Brass with Chrome Finish

Socket + Element

Low Pressure - Brass / Phosphor Bronze
High Pressure - AISI 316 Stainless Steel

Thread

1/8", 1/4", 3/8", 1/2" NPT, BSP, BSPT

Movement

Brass

Dial

White Aluminium (Black Printing)

Pointer

Black Aluminium

Window

Sheet Glass

Standard Size

63, 100, 150, 200, 250, 300mm

Accuracy class

1%

Scale Range

63mm Vacuum to 1,000 bar
100, 150mm Vacuum to 3,500 bar

Ordering information

State:- Pressure gauge model
/ Nominal size / Scale range
/ Size and location of connection / Optional extras reqd.

Optional extras

White plastic dial (Black Printing).
Micro adjustable pointer / Black Finish.
Other pressure connections (including high pressure).
Monel to Nace MR-01-75 wetted parts.
Laminated safety glass / Perspex window.
Customer logo.
Vibrageauge®

Further options: on request



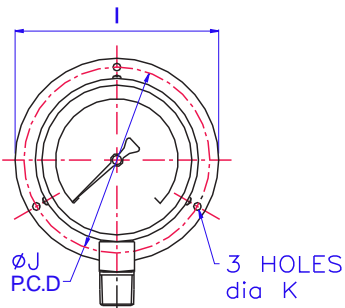
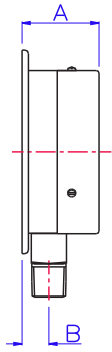
Model - 412

We manufacture a wide range of instruments to customer's special requirements
We shall be pleased to discuss and advise on your specifications.

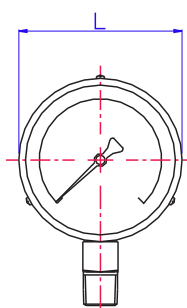
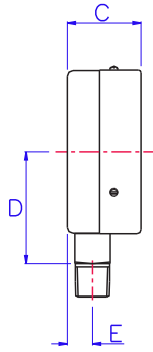
Specifications and dimensions given in this leaflet represent the state of engineering at the time of printing.
Engineering modifications may take place without prior notice.

Models-411, 412, 413, 414.
Mild Steel or Aluminium Case & Brass Internals

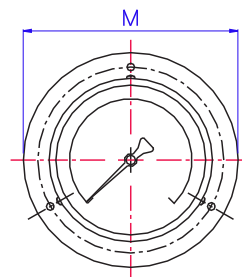
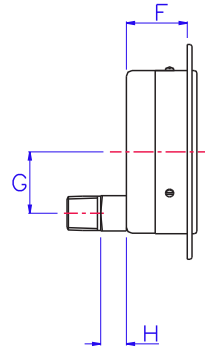
Surface Mounted
Model - 411



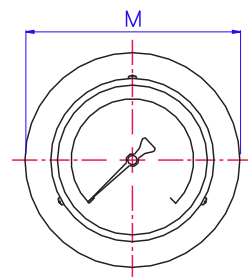
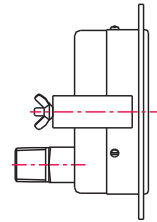
Direct Mounted
(Standard)
Model - 412



Flush Mounted
Screw Fixing
Model - 413



Flush Mounted
Clamp Fixing
Model - 414



Dimensions Diameter	A	B	C	D	E	F	G	H	I	J	K	L	M	Panel Cut-out
63	37	12	37	42	12	31	20	12.5	90	76	4	65	90	70
100	50	19	45	70	14	39	32	18.5	127	116	5	103	134	112
150	50	19	45	93	14	39	32	18.5	178	168	5	152	185	165
200	54	18	52.5	122	17	46	52	16	235	221	5.5	204	239	215
250	55	17	55	148	17	49	52	16	290	273	6.5	256	302	270
300	56	17	56	173	17	51	52	16	346	325	6.5	306	369	330